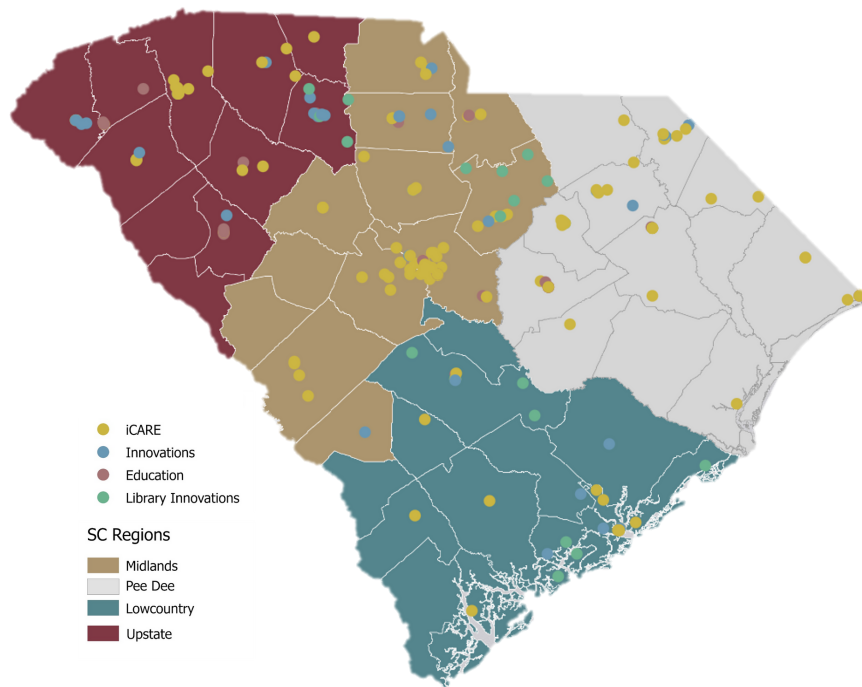


SC CENTER FOR RURAL AND PRIMARY HEALTHCARE

The mission of the CRPH is to accelerate the development and support of sustainable healthcare delivery, training and educational initiatives, and innovative programs for rural communities. Our goal is to support our rural areas of the state through sustainable healthcare delivery; training and other educational initiatives; innovative programs; and robust research & evaluation. We seek to ensure all rural communities in the state have access to high quality and value healthcare.

OUR SERVICE SITES



OUR IMPACT

200+

MEDICAL STUDENTS AND RESIDENTS

gained rural health experience through our iCARE programs

5

ADDITIONAL RURAL INNOVATIONS

programs to tackle rural health problems at the community level in 2021

45

COMMITTED RURAL PRACTITIONERS

in the Rural Loan Forgiveness Program for medical, physician assistant, and advance practice registered nurse students

37

COUNTIES IN SOUTH CAROLINA

have service locations with Center for Rural and Primary Healthcare programs

We are committed to collaborating with partners across the state so that all South Carolinians can access high quality and high value care regardless of where they live.

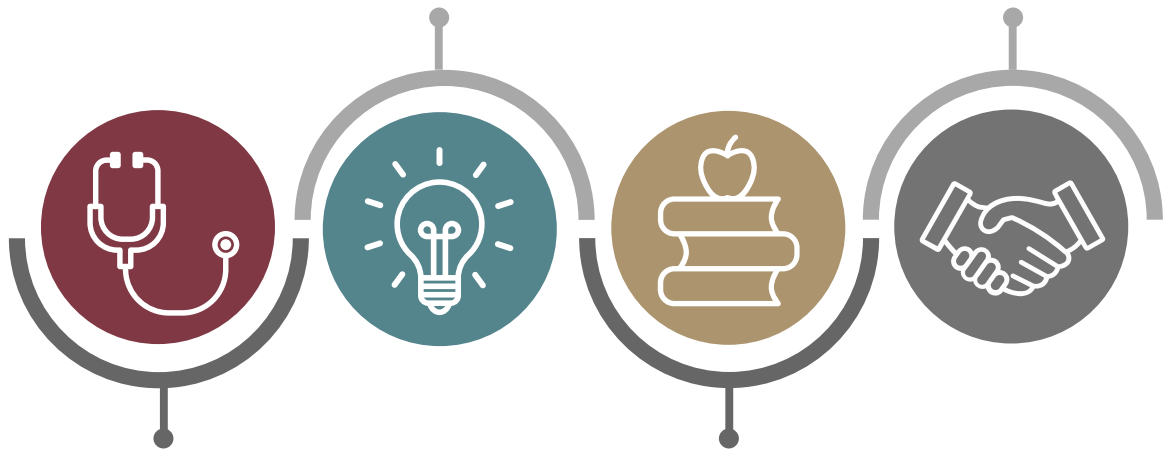
SC CENTER FOR RURAL AND PRIMARY HEALTHCARE

The mission of the CRPH is to accelerate the development and support of sustainable healthcare delivery, training and educational initiatives, and innovative programs for rural communities. Our goal is to support our rural areas of the state through sustainable healthcare delivery; training and other educational initiatives; innovative programs; and robust research & evaluation. We seek to ensure all rural communities in the state have access to high quality and value healthcare.

OUR WORK

INNOVATION

STRATEGIC WORKFORCE



**CLINICAL
OUTREACH**

**EDUCATIONAL
SUPPORT**

Improving rural health includes generating increase attention to both the issues we face as well as the vibrancy of our rural areas. The Growing Rural podcast offers a diverse and authentic depiction of the issues facing rural South Carolinians and celebrates their successes. Through interviews with community leaders, policy makers, and researchers, we learn about the powerful work happening everyday throughout our state.



GROWING RURAL

A PODCAST FROM THE SC CENTER FOR RURAL AND PRIMARY HEALTHCARE